

COVID-19 Vaccine Bulletin #7

Vaccine FAQs

The purpose of the Vaccine Bulletin is to give you the latest information about COVID-19 vaccines. For this bulletin, the focus will be on the provincial process for local prioritization of populations and frequently asked questions about the COVID-19 vaccine for health care providers.

Quick Updates:

- The total number of doses administered in **Wellington-Dufferin-Guelph** is **4407**.
- Wellington-Dufferin-Guelph Public Health (WDGPH) and Guelph Wellington Paramedic Services have collaborated to complete on-site resident vaccination clinics in **20** long-term care and retirement homes. All long-term care residents are scheduled to have first doses completed by **January 23** and retirement home residents by **January 27**.
- In addition to staff at long-term care and retirement homes, vaccinations are currently being offered to all support workers who work in these homes and where supply is available, to essential caregivers.
- WDGPH piloted a mass vaccination clinic at the Legacy Groves site (Union St.) in Fergus. The plan is to have the Legacy Groves site running regular clinics when a supply of vaccine is available.

Ministry of Health Vaccine Updates

- The pausing of some production lines at Pfizer's facility in Belgium to increase overall capacity will affect vaccine deliveries for a period of time.
- The administration of first doses of vaccines will be paused **except** for residents of long-term care and high-risk retirement homes. When vaccine supplies allow, we will begin to vaccinate any remaining staff, support workers and essential caregivers in long-term care and retirement homes.
- Individuals who have already received the **Pfizer** vaccine will be able to get their second dose 27- 42 days following the first dose:
 - Residents of long-term care and retirement homes who received the Pfizer vaccine will receive their second dose at ~27 days.
 - Staff and essential caregivers over the age of 70 years old will receive their second dose at ~27 days.
 - All other individuals will receive their second dose prior to 42 days
- For individuals who received the Moderna vaccine, the dose schedule of 28 days following the first dose will remain the same.
- [COVID-19 Vaccination Update: Technical Briefing \(January 13\)](#)

Local Prioritization of Populations

COVID-19 Vaccine Sequence Strategy Task Force

- WDGPH has established a COVID-19 Vaccine Sequence Strategy Task Force. The Task force will be responsible for providing recommendations to the Medical Officer of Health for the prioritization of populations within Phase 1 for receiving the vaccine.
- Task Force members represent many sectors in the community including municipal government, business, mental health and addictions, primary care, dentistry, pharmacy, allied health professionals, academia and social justice.

COVID-19 Vaccine Prioritization and Distribution Framework for WDGPH (attached)

- The **attached framework** has been updated January 12. It may change and is subject to vaccine availability. It does not take into account the authorization of different vaccines in the future.

Vaccine Clinic Support

WDGPH continues to engage with primary care leaders and other community partners to explore clinic models and options for each Phase of the vaccine rollout.

If you work in health care and are willing to **volunteer** to help Wellington-Dufferin-Guelph's vaccine rollout, please fill in this [survey](#). We will contact you if we are able to provide you with an opportunity.

Frequently Asked Questions for Health Care Providers

What advice should health care providers give to individuals who are pregnant, breastfeeding, immunocompromised, or have allergies about receiving the vaccine?

All health care providers should review the information in the [COVID-19 Vaccination Recommendations for Special Populations](#) and be aware of the [attestation form](#) for those who are pregnant, breastfeeding or immunocompromised. Primary care providers should be available and prepared to provide recommendations to their patients/clients for receiving the vaccine.

What is the time interval suggested between another vaccine and getting the COVID-19 vaccine?

[NACI recommends](#) that individuals wait for at least 14 days after receiving another vaccine before receiving the COVID-19 vaccine. It is also recommended that individuals wait 28 days after receiving the two-dose COVID-19 vaccine before administration of another vaccine.

When will essential caregivers for residents of long-term care homes be eligible for vaccine?

Essential caregivers are currently eligible to receive the vaccine. At this time the appointments for essential caregivers are paused due to the supply disruption,

When will patients who have chronic illness but not over the age of 65 receive the vaccine?

Individuals with high risk chronic conditions will be eligible for vaccinations in [Phase 2](#) of the vaccine roll-out (April to July 2021).

Are health care providers who administer vaccine eligible for the vaccine?

Yes, individuals who are administering vaccinations at a clinic are eligible to receive the vaccine. Currently, all vaccinations are paused outside of residents of LTC and high-risk retirement homes.

Can individuals who tested positive for COVID-19 receive the vaccine?

[NACI recommends](#) that individuals who tested positive for COVID-19 in the past receive the vaccine. Individuals who tested positive for COVID-19 and are still in isolation must wait until their isolation period is over before receiving the vaccine.

Are health care providers still required to be swabbed/wear PPE, etc. after receiving both doses of the vaccine?

[NACI recommends](#) that all individuals should continue to practice recommended public health measures for prevention and control of COVID-19 regardless of vaccination, at this time. There is insufficient evidence on the duration of protection and the effectiveness of the vaccine in preventing asymptomatic infection and transmission.

What should be considered if patients/clients have symptoms after receiving the vaccine?

Distinguishing between vaccine adverse events and symptoms of COVID-19 or complications of co-morbidities will be important, especially among residents of long-term care/retirement homes and testing for COVID-19 may be appropriate. Receipt of a vaccine will not interfere with the results of molecular testing for COVID-19.

When will vaccine be available at primary care physician offices and pharmacies?

Vaccines will be more widely available at pharmacies and primary care settings during the later part of [Phase 2](#) and [Phase 3](#) of the vaccine roll-out (May to August 2021).

What role can physicians and other health care providers play in the vaccine rollout?

- Educate and advise patients/clients about the vaccine.
- Review vaccine clinic checklists and materials available for planning purposes:
 - [COVID-19 Vaccine Clinic Operations Planning Checklist](#) (MOH)
 - [COVID-19 Vaccine Administration Training](#) (WDGPH)
- Engage in discussion with your local primary care leads to explore local options and opportunities to participate.
- Be prepared to offer vaccine to patients/clients during Phase 3 of the rollout.
- [Report any adverse events](#) following immunization by filling out the [Ontario AEFI Reporting Form](#) and sending it to the local public health unit.

Answers to Vaccine Questions for the Public

Please visit the public section of our website to find general information about COVID-19 vaccines: www.wdgppublichealth.ca/vaccine

Adverse Events Following Immunization (AEFIs) in Ontario

Public Health Ontario Summary Report – [AEFIs for COVID-19 in Ontario: December 13, 2020 to January 9, 2021](#)

Status of Doses Administered in Ontario

Total doses administered = 237,918

Daily doses administered = 13,784

Total vaccinations completed = 32,361

NACI Recommendations on the Use of COVID-19 Vaccines

There have been updates to the National Advisory Committee's (NACI) [Recommendations on the Use of COVID-19 Vaccines](#):

- It includes a section of [management options](#) for the COVID-19 vaccine rollout in the context of limited vaccine supply. It summarizes available evidence and considerations to guide jurisdictions in the rollout of vaccines including the delay of second doses.

Reliable Sources of Information on Vaccines

[Public Health Agency of Canada](#)

[Government of Ontario](#)

[Public Health Ontario](#)

[Centre for Effective Practice \(CEP\)](#)

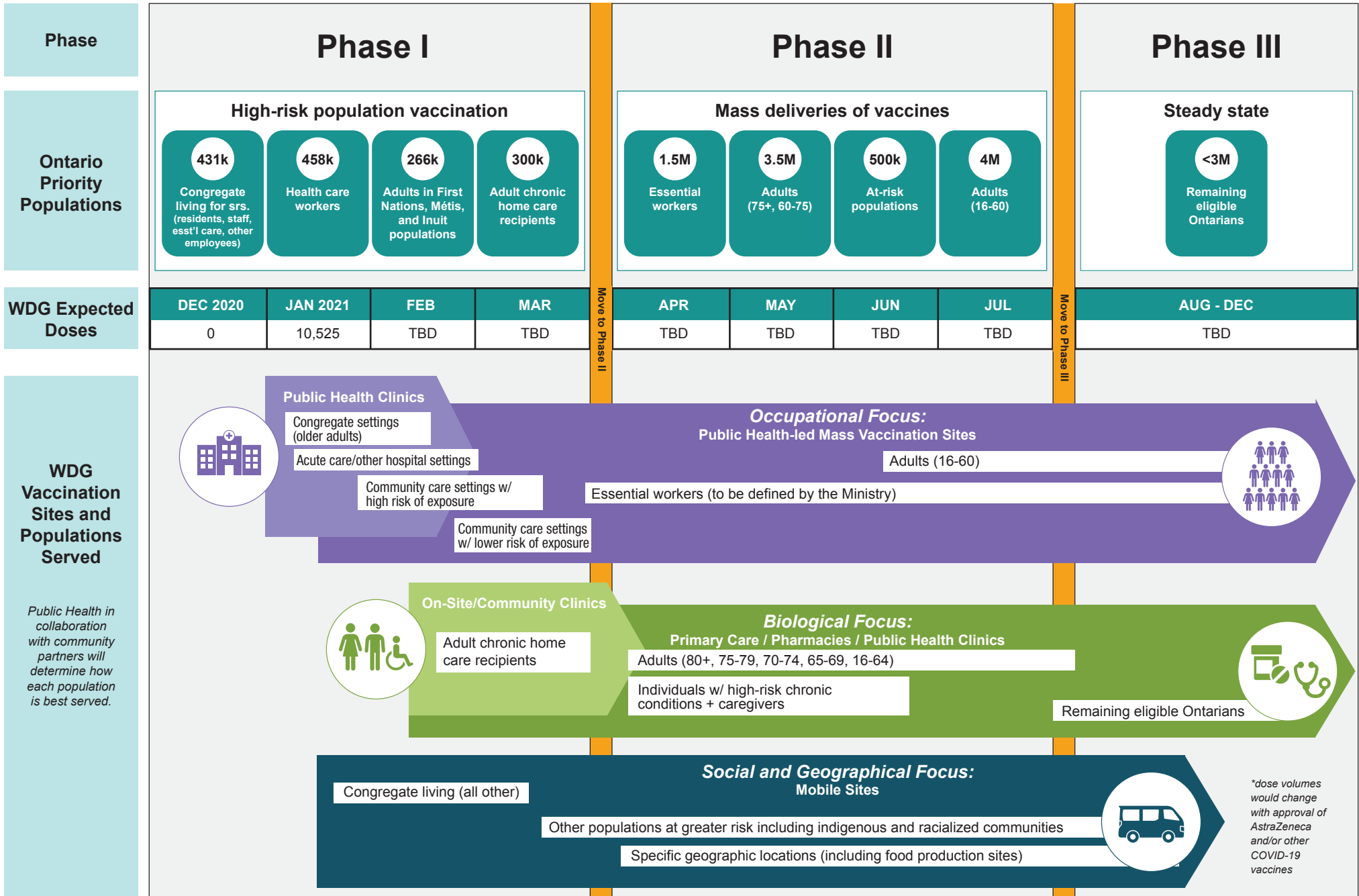
[World Health Organization](#)

[COVID-19 Studies from the World Health Organization Database](#)

[Centres for Disease Control and Prevention \(CDC\)](#)

COVID-19 Vaccine Prioritization and Distribution Framework

For deployment of Pfizer and Moderna vaccines*



*dose volumes would change with approval of AstraZeneca and/or other COVID-19 vaccines