

Point-of-Care Risk Assessment (PCRA)

A PCRA is used to determine what PPE should be selected based on the task that is about to be performed. It should be completed before entering any client/resident space and must consider the task at hand, the environment, and the individual client/resident.

The purpose of a PCRA is to reduce the likelihood of an unprotected exposure which may facilitate the transmission of microorganisms leading to infection. This is the first step in routine practices and should be used in conjunction with other routine practices and additional precautions.

STEP 1 BEFORE any interaction, ask yourself the following:

The Task

- What type of task am I about to do (e.g., hands-on direct care, medication administration, feeding, non-clinical interaction, etc.)?
- Do I need additional supplies or equipment to complete this task (e.g., linens, wound dressing supplies, mechanical lift, etc.)?
- Am I properly trained for this task or do I need additional support?

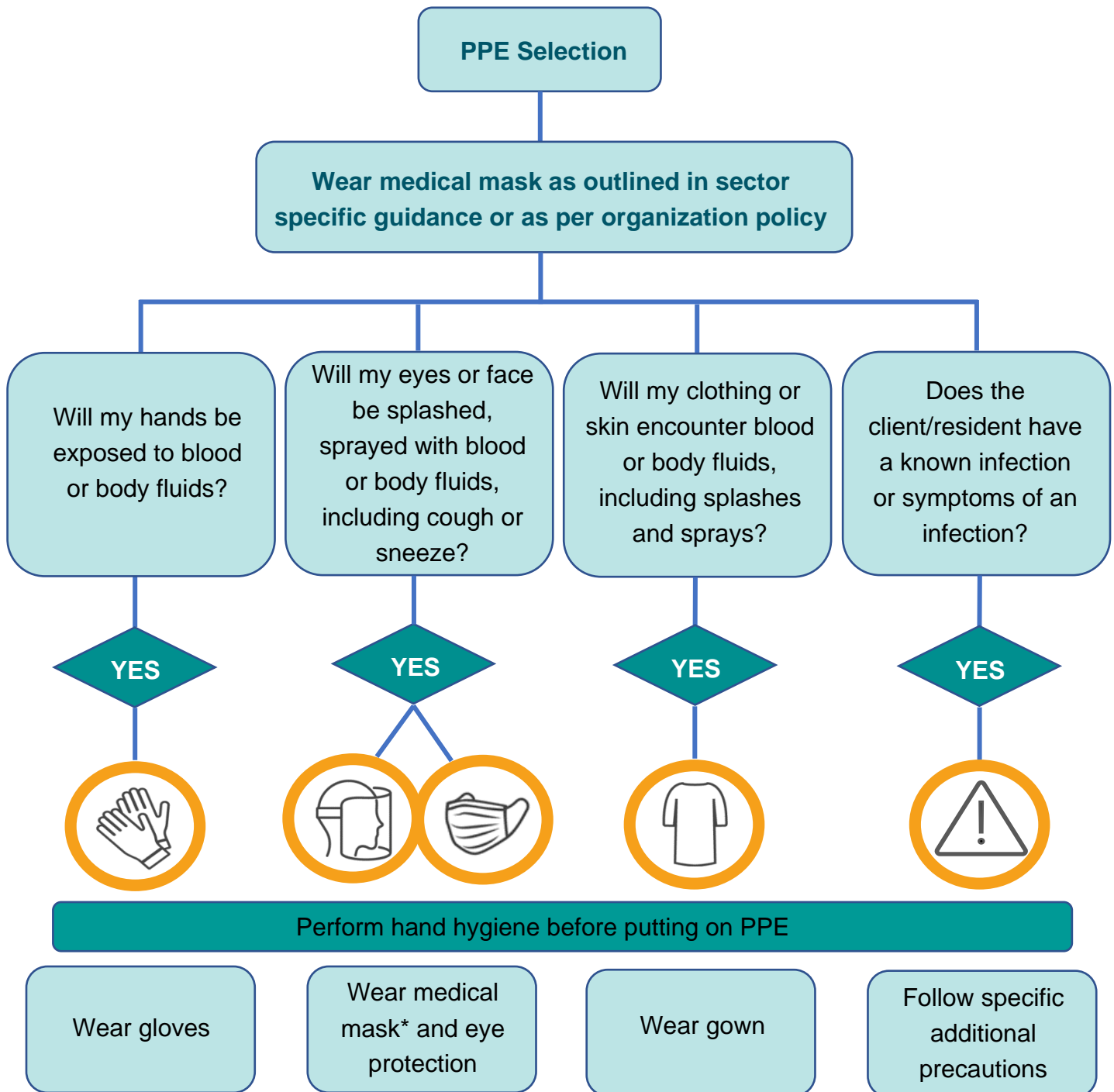
The Environment

- Are there any potential hazards that may get in my way (e.g., furniture, in-progress aerosol generating procedure (AGMP), etc.)?
- Is there enough space to maintain physical distancing of 2 metres during my task?
- Can I clean and disinfect my planned work space?
- Is there risk to or from another client/resident (e.g., an ambulatory roommate)?

Client/Resident

- Is the client/resident able to follow simple directions (e.g. wear a mask, maintain physical distancing, etc.)?
- Do they have any new or worsening symptoms (e.g., cough, fever, diarrhea, etc.)?
- Are there any additional precautions in place (e.g., contact precautions for MRSA)?
- Has the client/resident been screened for symptoms (e.g., daily symptom check)?

STEP 2 CHOOSE the most appropriate PPE for the task:



*Decision to wear a medical mask versus an N95 respirator is dependent upon your PCRA, the suspected/diagnosed organism and/or organization guidance.

References

BC Centre for Disease Control (BCCDC). COVID-19 Point-of-Care Risk Assessment (PCRA). [Internet]. 2022 [cited 2022 May 17]. Available from: http://www.bccdc.ca/Health-Professionals-Site/Documents/COVID19_PointOfCareRiskAssessTool.pdf

Public Health Ontario (PHO). Performing a Risk Assessment Related to Routine Practices and Additional Precautions. [Internet]. 2012 [cited 2022 May 17]. Available from: <https://www.publichealthontario.ca/-/media/documents/r/2012/rpap-risk-assessment.pdf?1a=en>