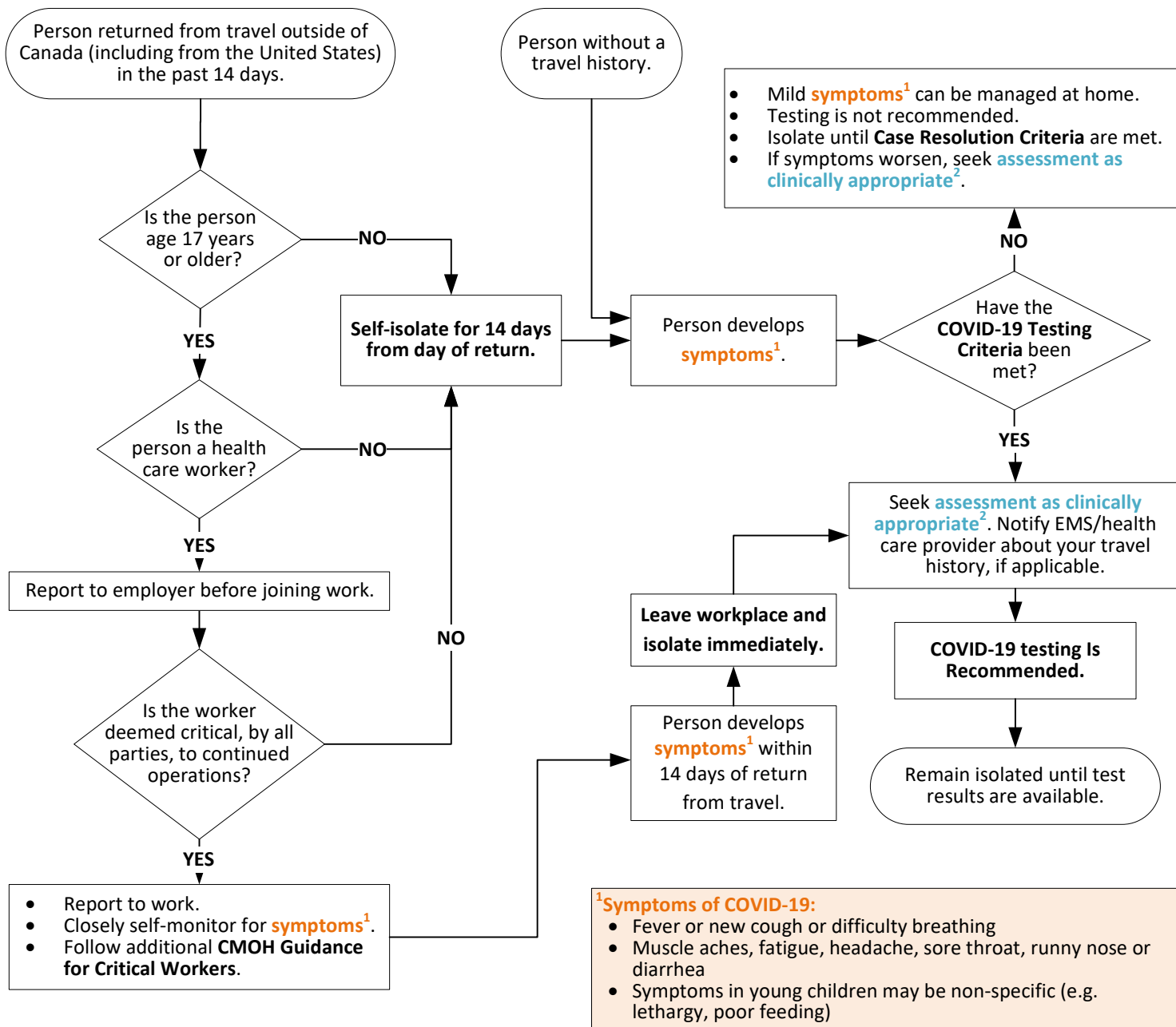


Interim Testing & Isolation Recommendations for COVID-19 (to best deploy testing supplies in Wellington-Dufferin-Guelph)

March 27, 2020



Summary of Changes (from March 17, 2020 version)

- Added branch for persons without a travel history
- Incorporated revised Testing Criteria based on Ministry of Health guidance (March 25, 2020)
- Incorporated CMOH Recommendations for Critical Workers (March 19, 2020)
- Removed separate definition for 'essential workers'
- Incorporated new Case Resolution Criteria based on Ministry of Health guidance (March 25, 2020)
- Language revisions re: 'isolation' vs. 'self-isolation'
- Added list of points of contact for clinical assessment

²Assessment as Clinically Appropriate:

- Use Ontario's COVID-19 Self-Assessment Tool
- Contact Telehealth Ontario (1-866-797-0000)
- Contact your primary health care provider (family physician, nurse practitioner, etc.)
- Visit the Headwaters COVID-19 Assessment Centre
 - 140 Rolling Hills Drive, Orangeville
 - 8:00 AM – 7:00 PM every day
 - No referral needed, walk-ins accepted
- Visit the Guelph COVID-19 Assessment Centre
 - 65 Delhi Street, Guelph
 - 8:00 AM – 8:00 PM every day
 - No referral needed, walk-ins accepted
- If symptoms are severe, call 911 or go to the nearest emergency department.

COVID-19 Testing Criteria

In order to best deploy testing supplies, the following groups should be prioritized for testing to inform public health and clinical management.

- Symptomatic health care workers (regardless of care delivery setting) and staff working in health care facilities.
- Symptomatic residents and staff in Long Term Care facilities, retirement homes and other institutional settings.
- Hospitalized patients with respiratory symptoms (new or exacerbated).
- Symptomatic members of remote, isolated, rural and/or indigenous communities.
- Symptomatic travellers identified at a point of entry to Canada.
- Individuals for whom testing is recommended by the Medical Officer of Health.

Testing for COVID-19 can be performed outside of these criteria, based on clinical judgement. However, decisions to test outside of these criteria should be made by exception and should not routinely be performed.

CMOH Recommendations for Critical Workers

Individuals who are deemed critical and who attend work within 14 days of returning from travel must do all the following during the 14 day period:

- Actively screen for symptoms of COVID-19.
- Take temperature twice daily to monitor for fever.
- Use appropriate Personal Protective Equipment (PPE).
- Immediately isolate if symptoms develop.

Please refer to the CMOH Memo Re: Managing Health Worker Illness and Return to Work COVID-19 (March 19, 2020) for additional details.

Case Resolution Criteria

These criteria apply to confirmed COVID-19 cases and to symptomatic individuals who are isolating but who have not been tested for COVID-19.

Individuals in home isolation due to COVID-19 symptoms can discontinue home isolation when all of the following criteria are met:

- 14 days have passed since the onset of the first symptom.
- The individual is afebrile.
- The individual's symptoms are improving.

Hospitalized patients can discontinue isolation when all of the following criteria are met:

- Two COVID-19 tests, obtained at least 24 hours apart, are negative.
- The individual is afebrile.
- The individual's symptoms are improving.

Absence of a cough is not required for those known to have a chronic cough or who are experiencing reactive airways post-infection.

Additionally, cases who are health care workers require two negative COVID-19 tests, obtained at least 24 hours apart, prior to return to work. For health care workers who are deemed critical, by all parties, to continued operations, individualized consideration can be given to returning to work 14 days after symptom onset provided that appropriate PPE is worn.