



Microwave radiation (Wi-Fi) in Schools Issues

MAY 2018



WIFI = MICROWAVE RADIATION IS NOT SAFE, REGARDLESS IF IT IS WIDE-SPREAD

Direct Impact to the Human Blood



Rouleaux formations of cells results leads to

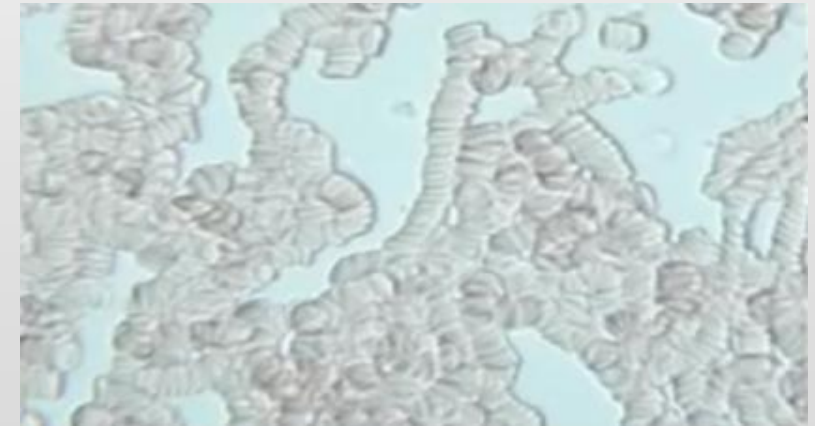
- Lower oxygen transportation
- Reduced waste removal

Exposure leads to noticeable indicator symptoms (but not limited to) include:

- Headaches
- Fatigue
- Difficulty concentrating
- Numbness, tingling
- Dizziness, nausea
- Weakness



Human blood cells sample in a Clean EMF free environment


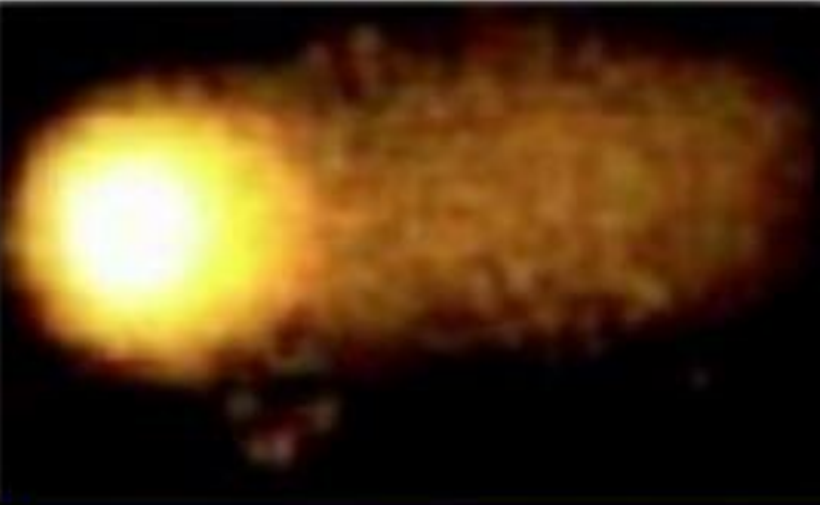
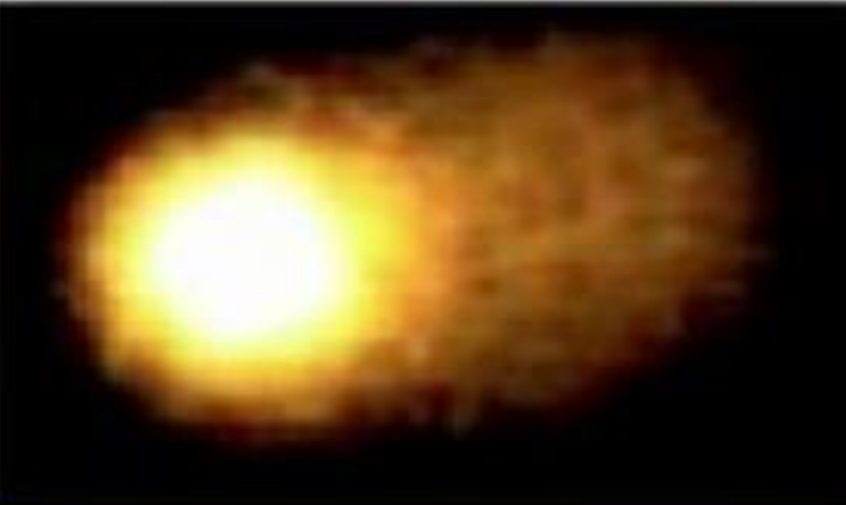


Rouleaux formation of cells binding after 10 minutes exposure to 2.4GHz WiFi radiation



Direct Impact to DNA.



		
<p>Sham</p> <p>Comet Assay - a typical picture after RF-EMF-exposition of HL60 leukaemia cells Image source: Adlkofer (2004).</p>	<p>Gamma-irradiation, 0.5Gy (1,600 chest x-rays)</p>	<p>24h mobile phone, RF-EMF, 1800MHz at SAR = 1.3W/kg. ICNIRP/WHO = 2W/kg</p>

© Dr Isaac Jamieson 2013

Direct Impact to the Human Body



Wi-Fi (microwave radiation) causes the following direct known impact to the Human Body:

- pineal gland
- adrenal gland
- thyroid gland and hormone levels which can affect the brain
- Melatonin Reduction - is not just critical to maintaining our sleep rhythm but it's also an antioxidant that helps to repair damaged DNA and reduces the growth of cancer cells
- Physiological and morphological changes, increased micronuclei formation, altered growth as well as adverse cell characteristics such as thinner cell walls and smaller mitochondria. Electromagnetic exposure (Microwave Radiation) creates biochemical changes.

Direct Impacts to Human Body



More Facts:

- Contributes to development of insomnia
- Damaging to childhood development
- Affects cell growth
- Derails brain functions
- Neutralizes sperm
- Impacts fertility in women and causes genetic generational defects
- Provokes cardiac stress
- Fatigue
- Headaches/Migraines
- Anxiety
- DEPRESSION
- Skin Rashes
- Hyperactivity, ADD, ADHD
- Memory Loss - Alzheimers

Direct Impact to the Human Body



Effects that people who are chronically exposed to low-level wireless antenna emissions report symptoms include such as problems as:

- Sleeping (insomnia), fatigue, headache, dizziness, grogginess, lack of concentration, memory problems, ringing in the ears (tinnitus), problems with balance and orientation, and difficulty in multi-tasking. In children, exposures to cell phone radiation have resulted in changes in brain oscillatory activity during some memory tasks

Carbon Monoxide Poisoning & Heart Attack Warnings



Carbon Monoxide Poisoning



Symptoms

- Dizziness
- Headache
- Vomiting with nausea
- Difficulty in breathing
- Blurred vision
- Feeling weak
- You lose consciousness



People can die as a result of this or have damage to the brain that is irreversible

Signs of carbon monoxide poisoning



Headaches Nausea Dizziness Breathlessness Collapse Loss of consciousness

STROKE KNOW THE WARNING SIGNS

If you experience any of these symptoms, CALL 9-1-1 or your local emergency number immediately.

- **Weakness**
Sudden loss of strength or sudden numbness in the face, arm or leg, even if temporary.
- **Trouble speaking**
Sudden difficulty speaking or understanding or sudden confusion, even if temporary.
- **Vision problems**
Sudden trouble with vision, even if temporary.
- **Headache**
Sudden severe and unusual headache.
- **Dizziness**
Sudden loss of balance, especially with any of the above signs.

SEE WHAT HAPPENS WHEN
YOU PUT YOUR HEART INTO IT.™

Technical Facts



Wireless WLANS send base stations, such as access points, so-called beacon signals periodically so that mobile units can recognize the network and authenticate themselves with an access point. These beacon signals comprise recognition signals, such as e.g. SSIDs and/or other radio frequency signals with control parameters. Even if no mobile units are located in the WLAN, the beacon signals continue to be transmitted periodically to the Aps. This means that even when the WLAN is not being used at all, an underlying stress from the electromagnetics radiation remains for persons in the Basic Service Area of an access point of the WLAN.

This means absolute constant radiation for all personnel within the UGDSB while on the premises.

Local Concerns



A growing number of concerned parents, and Ontario teachers unions (representing 45,000 teachers) are pointing to the World Health Organization's decision last May to classify radio-frequency electromagnetic fields as "a possible carcinogen," alongside lead and coffee.

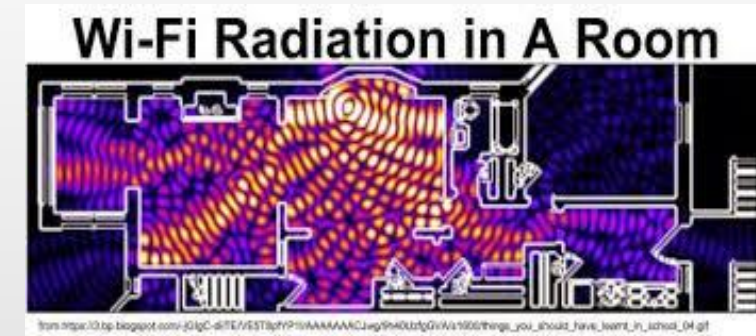
FACT: THERE ARE NO SAFE LEVELS OF MICROWAVE RADIATION FOR CHILDREN OR FOR HUMANS IN THE EMBRYOGENESIS OR FETAL DEVELOPMENT STAGES ESTABLISHED ANYWHERE IN THE WORLD.

Local Concerns



There is an absolute known that there are genotoxic effects from electromagnetic radiation elicited from non-thermal pathways. Devices such as the UGDSB Wi-Fi emitting electronic devices such as routers, modems, printers, laptops and related cause the following:

Damage to genetic material and white blood cells where both the DNA itself is damaged and chromosomes are changed, resulting in cancer.





Cumulative Classroom Radiation

- 30 Children, each on a wireless computer
- Exposure of any one child in the room
- Estimated power density
 - ◆ 60,000 to 80,000 $\mu\text{W}/\text{m}^2$

Bill Curry, PhD, Consulting Physicist,
EMSciTrek, 2/24/2000



Microwave Radiating Children



The MATH:

Microwave radiating

- 34,000 children
- 3,000 teachers & support staff

For 6 hours per day over 184 days/year

RESULTING IN 5 GENERATIONS = +340,000 Children being IMPACTED

CLARITY: This is non-ionizing radiation, that

can lead to serious, life-threatening health

problems such as Cancer, Lukemia, brain tumours and diabetes.



WIFI = MICROWAVE RADIATION IS NOT SAFE, REGARDLESS IF IT HAS WIDE-SPREAD USE



UGDSB Radiating Children & Adults in Schools

School					
Secondary Schools (Wellington County, Guelph, Dufferin County)					
<ul style="list-style-type: none"> Centennial Collegiate Vocational Institute Centre Dufferin District High School Centre Peel Secondary School Centre Wellington District High School 		<ul style="list-style-type: none"> College Heights Secondary School Erin District High School Guelph Collegiate Vocational Institute John F. Ross Collegiate Vocational Institute Norwell District 		<ul style="list-style-type: none"> Orangeville District Secondary School Wellington Heights Secondary School Westside Secondary School 	
Wellington County	Guelph	Dufferin County	Public School	King George Public School	Montgomery Village Public School, Orangeville
<ul style="list-style-type: none"> Aberfoyle Public School Alma Public School Arthur Public School Brisbane Public School Centre Peel Public School Drayton Heights Public School Elora Public School Eramosa Public School Erin Public School Harris Mill Public School J.D. Hogarth Public School, Fergus James McQueen Public School, Fergus John Black Public School, Fergus Kenilworth Public School Maryborough Public School, Moorefield 	<ul style="list-style-type: none"> Arbour Vista Public School Brant Avenue Public School Central Public School Edward Johnson Public School Fred A. Hamilton Public School Gateway Drive Public School Guelph Lake Public School Jean Little Public School John Galt Public School John McCrae Public School June Avenue Public School Ken Danby Public School 	<ul style="list-style-type: none"> Centennial Hylands Elementary School, Shelburne Credit Meadows Elementary School, Orangeville East Garafraxa Public School Glenbrook Elementary School, Shelburne Grand Valley and District Public School Hyland Heights Elementary School, Shelburne Island Lake Public School, Orangeville Laurelwoods Elementary School, Orangeville Mono-Amaranth Public 	<ul style="list-style-type: none"> Ross R. MacKay Public School, Hillsburgh Salem Public School Victoria Cross Public School, Mount Forest Victoria Terrace Public School, Fergus 	<ul style="list-style-type: none"> Kortright Hills Public School Mitchell Woods Public School Ottawa Crescent Public School Paisley Road Public School Priory Park Public School Rickson Ridge Public School Sir Isaac Brock Public School Taylor Evans Public School Victory Public School Waverley Drive Public School Westminster Woods Public School Westwood Public School William C. Winegard Public School Willow Road Public School 	<ul style="list-style-type: none"> Parkinson Centennial Public School, Orangeville Primrose Public School Princess Elizabeth Public School, Orangeville Princess Margaret Public School, Orangeville Spencer Avenue Elementary School, Orangeville

Local Concerns



NEWS

TRENDING

Hackers, creepers, solider, spy / Hongker / Field / Canadian / Ukraine / BlackBerry / Ontario

Ontario Catholic teachers' union recommends pulling plug on Wi-Fi in schools

20 March 2013

France: Electromagnetic Waves: The Precautionary Principle Soon to be Applied in Schools

Voted 19 March 2013 at the French National Assembly (Lower House), an amendment of the law stipulates that the establishment of the digital educational program foreseen by the text favors "wired" connections, that is, Ethernet, rather than Wi-Fi, in order to protect children. This amendment still has to be passed in the French Senate (Upper House); it is not certain that this will happen because the industrial lobby is powerful and has "contaminated" a number of members of Parliament.



Electromagnetic Waves : The Precautionary Principle Soon in Schools
Le Parisien.fr / AFP, 19 March 2013 (translated from French)

It is the first time that the precautionary principle will be applied in France to children. Failing to succeed with adoption of their draft legislation on electromagnetic waves in January, the ecologist deputies have obtained approval of draft school reform legislation for precautionary measures in schools.

Voted Tuesday at the National Assembly, an amendment of the law stipulates that the public service establishment of the digital educational program foreseen by the text favors "wired" connections, that is, Ethernet, rather than Wi-Fi.

Ontario Teachers Union wants cell phones turned off in the classroom

Thu, 15 Aug, 2013 4:30 PM EDT

TORONTO, Aug. 15, 2013 /CNW/- This afternoon the Elementary Teachers Federation of Ontario voted at its annual general meeting that student cell phones should be turned off and stored during school hours, unless a teacher gives permission.

The vote was part of a series of motions requesting that radiation from cell phones and Wi-Fi be recognized as a potential workplace hazard for teachers.

"There is cause for concern for members' health and safety, especially women," said Sandra Wash, a teacher representing Peel District who spoke at the meeting.

Ontario school cuts Wi-Fi over safety concerns

Post: 1 2 3 4 5 6 7 8 9 10 11 12 13 14 15 16 17 18 19 20 21 22 23 24 25 26 27 28 29 30 31 32 33 34 35 36 37 38 39 40 41 42 43 44 45 46 47 48 49 50 51 52 53 54 55 56 57 58 59 60 61 62 63 64 65 66 67 68 69 70 71 72 73 74 75 76 77 78 79 80 81 82 83 84 85 86 87 88 89 90 91 92 93 94 95 96 97 98 99 100 101 102 103 104 105 106 107 108 109 110 111 112 113 114 115 116 117 118 119 120 121 122 123 124 125 126 127 128 129 130 131 132 133 134 135 136 137 138 139 140 141 142 143 144 145 146 147 148 149 150 151 152 153 154 155 156 157 158 159 160 161 162 163 164 165 166 167 168 169 170 171 172 173 174 175 176 177 178 179 180 181 182 183 184 185 186 187 188 189 190 191 192 193 194 195 196 197 198 199 200 201 202 203 204 205 206 207 208 209 210 211 212 213 214 215 216 217 218 219 220 221 222 223 224 225 226 227 228 229 230 231 232 233 234 235 236 237 238 239 240 241 242 243 244 245 246 247 248 249 250 251 252 253 254 255 256 257 258 259 260 261 262 263 264 265 266 267 268 269 270 271 272 273 274 275 276 277 278 279 280 281 282 283 284 285 286 287 288 289 290 291 292 293 294 295 296 297 298 299 300 301 302 303 304 305 306 307 308 309 310 311 312 313 314 315 316 317 318 319 320 321 322 323 324 325 326 327 328 329 330 331 332 333 334 335 336 337 338 339 340 341 342 343 344 345 346 347 348 349 350 351 352 353 354 355 356 357 358 359 360 361 362 363 364 365 366 367 368 369 370 371 372 373 374 375 376 377 378 379 380 381 382 383 384 385 386 387 388 389 390 391 392 393 394 395 396 397 398 399 400 401 402 403 404 405 406 407 408 409 410 411 412 413 414 415 416 417 418 419 420 421 422 423 424 425 426 427 428 429 430 431 432 433 434 435 436 437 438 439 440 441 442 443 444 445 446 447 448 449 450 451 452 453 454 455 456 457 458 459 460 461 462 463 464 465 466 467 468 469 470 471 472 473 474 475 476 477 478 479 480 481 482 483 484 485 486 487 488 489 490 491 492 493 494 495 496 497 498 499 500 501 502 503 504 505 506 507 508 509 510 511 512 513 514 515 516 517 518 519 520 521 522 523 524 525 526 527 528 529 530 531 532 533 534 535 536 537 538 539 540 541 542 543 544 545 546 547 548 549 550 551 552 553 554 555 556 557 558 559 560 561 562 563 564 565 566 567 568 569 570 571 572 573 574 575 576 577 578 579 580 581 582 583 584 585 586 587 588 589 590 591 592 593 594 595 596 597 598 599 600 601 602 603 604 605 606 607 608 609 610 611 612 613 614 615 616 617 618 619 620 621 622 623 624 625 626 627 628 629 630 631 632 633 634 635 636 637 638 639 640 641 642 643 644 645 646 647 648 649 650 651 652 653 654 655 656 657 658 659 660 661 662 663 664 665 666 667 668 669 670 671 672 673 674 675 676 677 678 679 680 681 682 683 684 685 686 687 688 689 690 691 692 693 694 695 696 697 698 699 700 701 702 703 704 705 706 707 708 709 710 711 712 713 714 715 716 717 718 719 720 721 722 723 724 725 726 727 728 729 730 731 732 733 734 735 736 737 738 739 740 741 742 743 744 745 746 747 748 749 750 751 752 753 754 755 756 757 758 759 760 761 762 763 764 765 766 767 768 769 770 771 772 773 774 775 776 777 778 779 780 781 782 783 784 785 786 787 788 789 790 791 792 793 794 795 796 797 798 799 800 801 802 803 804 805 806 807 808 809 810 811 812 813 814 815 816 817 818 819 820 821 822 823 824 825 826 827 828 829 830 831 832 833 834 835 836 837 838 839 840 841 842 843 844 845 846 847 848 849 850 851 852 853 854 855 856 857 858 859 860 861 862 863 864 865 866 867 868 869 870 871 872 873 874 875 876 877 878 879 880 881 882 883 884 885 886 887 888 889 890 891 892 893 894 895 896 897 898 899 900 901 902 903 904 905 906 907 908 909 910 911 912 913 914 915 916 917 918 919 920 921 922 923 924 925 926 927 928 929 930 931 932 933 934 935 936 937 938 939 940 941 942 943 944 945 946 947 948 949 950 951 952 953 954 955 956 957 958 959 960 961 962 963 964 965 966 967 968 969 970 971 972 973 974 975 976 977 978 979 980 981 982 983 984 985 986 987 988 989 990 991 992 993 994 995 996 997 998 999 1000

chicoronto.ca

Published Thursday, September 6, 2011 10:05PM EDT

A private school in Ontario has cut its wireless Internet network over concerns that the technology causes health issues in students.

Pretty River Academy in Collingwood, Ont., a private school with 150 students attending kindergarten to Grade 12, is the first Ontario school to remove Wi-Fi from campus.

The school's old Wi-Fi system was taken out over the summer and replaced with Ethernet connections ahead of the first day of the school year.

01 July 2013

Switzerland: Teachers Vote to Keep Wi-Fi Out of School

This recently published article in a La Chaux-de-Fonds newspaper (canton Neuchâtel) is revealing regarding wi-fi in schools in the canton, the opinion of a doctor and geneticist at Geneva's university hospital, and the current recommendations of the Swiss Federal Office for Public Health.



Blaise-Cendrars High School, La Chaux-de-Fonds

Teachers Are Out to Get Wi-Fi

by Sylvia Freda, L'Impartial, 27 juin 2013
(translated from French by the Editor of this blog)

At the Blaise-Cendrars High School, wi-fi is not taken for granted

Teachers at the Blaise-Cendrars High School in La Chaux-de-Fonds, have all recently decided that there will be no wi-fi, neither in the cafeteria nor in classrooms as a precautionary approach to everyone's health. "In the beginning, we had selected installation of a wireless network for the sake of educational convenience", explains Patrick Hermann, Director of the establishment. "We wanted to allow teachers and students to work on tablets and other computers in the cafeteria and in classrooms. The work had already begun."

NEWS

Winlaw parents win lobby for no Wi-Fi in school

Wi-Fi Radiation in A Room



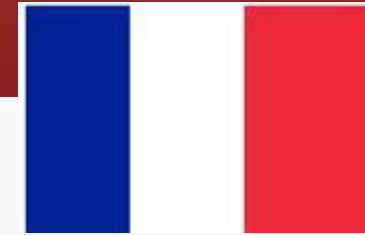
International Concerns: RUSSIA



Population: 144.3 Million

- The Russian National Committee on Non-Ionizing Radiation Protection has repeatedly warned about electromagnetic radiation impacts on children and recommended WiFi not be used in schools.

International Concerns: FRANCE



Population: 66.9 Million

- National Legislation minimizing WiFi has been passed and the National Agency for Health, Food and Environmental Safety (ANSES) issued a report on the science in 2013.
- 2015 Law passed: WiFi banned from nursery schools, Wifi must be turned off in elementary schools when not in use, Cellphone advertisements must recommend headsets to reduce exposure to brain.
- 2011 French Cell Phone Statute: Merchants must display SAR Radiation levels for different phone models, all phones must be sold with a headset, cell phone ads aimed at children younger than 14 are banned and phones made for children under 6 are banned.
- 2013 ANSES Report recommends hands free phones, SAR labeling, and “limiting the population's exposure to radiofrequencies... especially for children and intensive users, and controlling the overall exposure that results from relay antennas.”
- The French National Library along with other libraries in Paris, and a number of universities have removed all Wi-Fi networks.
- Herouville-Saint-Clair has removed all Wi-Fi equipment installed in municipal buildings.

International Concerns: SPAIN



Population: 46.56 Million

- The Parliament of Navarra **voted to urge removal of WIFI in schools and to apply the precautionary principle in relation to exposure limits to electromagnetic fields whose boundaries have become "obsolete".**
- The Parliament voted to adopt a resolution which calls to implement the Parliamentary Assembly of the Council of Europe resolution 1815 of 2011, which recommends to "review the scientific basis for the standards of exposure to electromagnetic fields" and "set thresholds for levels of preventive long-term exposure in all indoor areas not exceeding 0.6 volts per meter".
- The Vitoria City Council unanimously approved a precautionary approach with wireless: Citizens will be informed of the location of wireless transmitters in civic centers and municipal buildings. It is recommended that children's spaces such as playgrounds and family libraries, will be free of WiFi or have decreased wifi and wifi free zones will be established in playgrounds and building entrances.

International Concerns: ISRAEL



Population: 8.57 Million

- The Parliament of The Israeli Ministry Of Education has issued guidelines limiting WiFi and cell phone use in schools including.
- Preschool through 2nd grade have banned the use of wireless networks. A hard wired direct cable connection is required if the teacher has a computer in the class. Magnetic fields below 4MG are being reduced.
- The Israeli Supreme Court ordered the Israeli government to reply on ceasing Wifi installations
- In third and fourth grade class internet is restricted to 3 hours per week.
- The Education Ministry has instructed all schools to perform radiation tests.
- The Health Ministry has called for a halt to Wifi installations.
- See the governments official EMF information webpage Israeli National Information Center for Non-Ionizing Radiation

International Concerns: ITALY



Population: 60.6 Million

The Parliament The Italian Supreme Court ruled a man's brain tumor was caused by his cell phone use in 2012. The National Institute for Workmen's Compensation must compensate a worker with head tumor due to cell use.

On June 10, 2015, the State Parliament of South Tyrol voted to allow the application of the precautionary principle mandating the state government to:

1. To replace existing wireless networks whenever possible with networks that emit less radiation at schools, preschools, hospitals, nursing homes, and other public facilities.
 2. Establish a working group whose mandate it is to assess these new technologies and their exposure levels. With regard to wireless communication technologies, mobile Internet access, and public health, the working group shall clarify which technologies emit less radiation and provide sustainable technology options and
 3. To start an education and awareness campaign that informs about possible health risks, especially regarding the unborn, infants, children, and adolescents and that develops guidelines for a safer use of cell phones, smartphones, and Wi-Fi.
- Discussion at the Plenary Session, 10 June 2015 (in German)



International Concerns: ITALY



Switzerland



Germany



Britain



Cyprus



India



Finland



Namibia

Conclusion



It is imperative that all Wi-Fi emitting devices be immediately removed from operation in/around not only my children, but all children within this school board. In fact, a few select individuals within the UGDSB are directly responsible for radiating our children and approx. 34,000 other children who attend approx. 65 schools with children ranging from 3 – 18 years of age, and over 3,000 teachers& support staff (many of whom are women) within Dufferin County, Wellington County and the City of Guelph for Kindergarten, Full Day Early Learning and through High-School.



Conclusion (cont'd)



If the UGDSB had obtained correct information, you would have never decided to deploy this technology to children:

1. Incorrect, outdated and biased data from Health Canada. More specifically, Health Canada is confused about the World Health Organization's warning that wireless devices, including wireless internet are possible causes of cancer. Dr. Jonathan Samet the chairman of the WHO's International Agency for Research on Cancer. He says the classification of microwaves/radio frequency radiation includes wireless internet or Wi-Fi.
2. Incorrect, outdated and biased data from Wellington-Dufferin-Guelph Public Health and;
3. Incorrect information from the **World Health Organization(WHO), who states otherwise.**

Recommendations: We cannot afford 'business as usual' any longer. **PROTECT NEW LIFE - INFANTS AND CHILDREN**



It is clear that the entire UGDSB organization does not currently and has never had the appropriate level of understanding of the impacts of the use of this technology, YOU MUST, without further delay, IMMEDIATELY cease to operate any/all Wi-Fi emitting devices for the safety of all:

1. Children (under the age of 18)
2. Teachers & Support Staff (who may potentially be pregnant)
3. Elderly
4. Those with pre-existing chronic conditions, such as, but not limited to Electro-Magnetic Hypersensitivity (EHS).
5. General public that may be exposed due to being in/near/around UGDSB property



Thanks & Sleep Well!!!



Vote to remove WIFI in schools and to apply the precautionary principle in relation to exposure limits to electromagnetic fields whose boundaries have become "obsolete". Err on the side of caution.



CANADA WILL NOT BE ABLE TO FINANCIALLY SUPPORT THE IMPACTS TO ITS CITIZENS FROM THIS RADIATION