

COVID-19 IMS Response

**Board of Health Meeting
8 July 2020**

Christopher Beveridge
Director, Health Protection
Wellington-Dufferin-Guelph Public Health
Christopher.Beveridge@wdgpublichealth.ca

IMS Overview

The Incident Management System (IMS):

- Provides standard framework for responding to events that require immediate reordering of priorities and deployment of human or material resources.
- Based on an understanding that there are certain management functions that must be carried out as part of an emergency response.

Timeline

Wednesday 8 July 2000

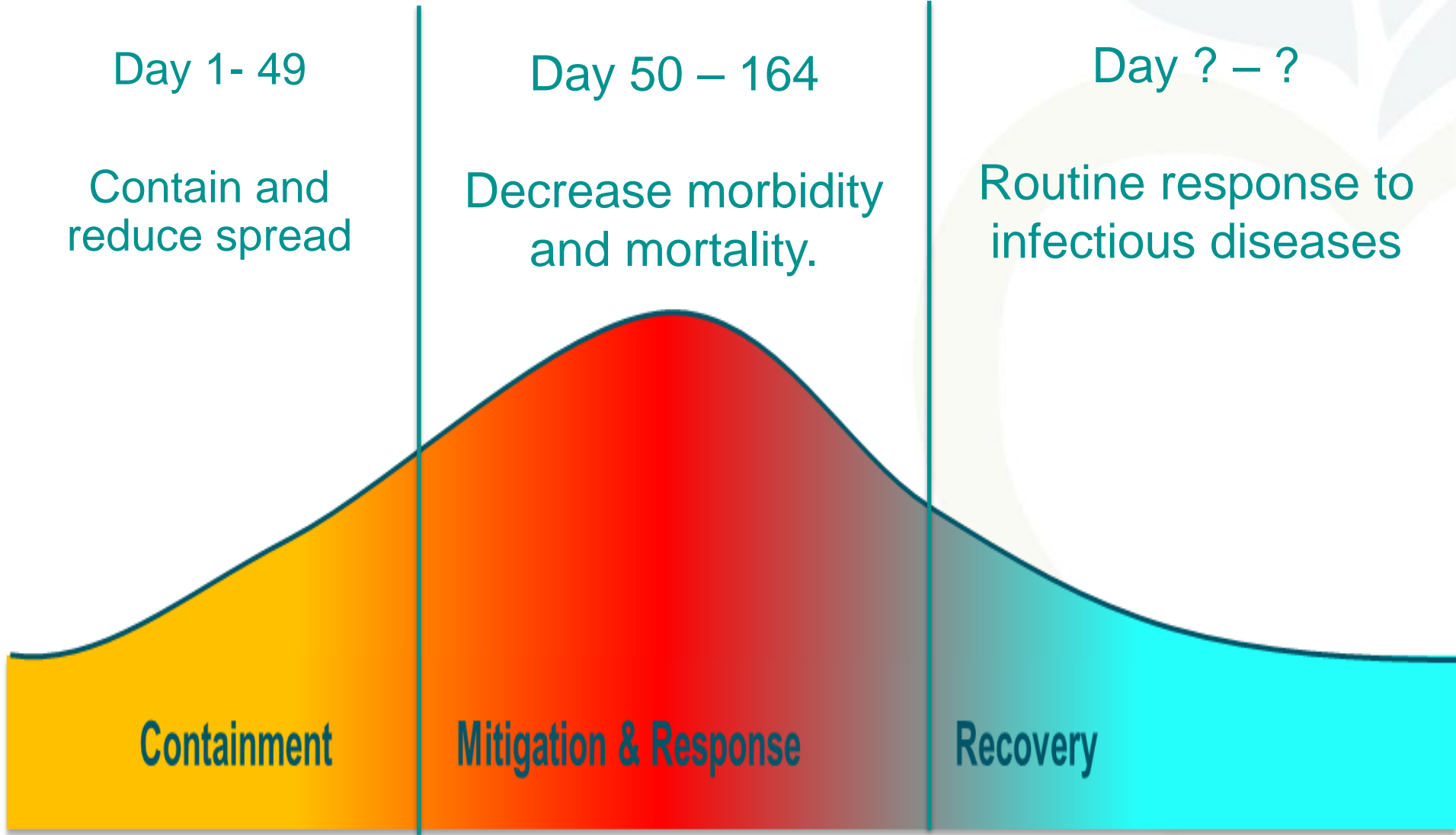
164 days working in IMS structure

- 27 January 2020

118 days from Provincial Emergency Declaration

- 13 March 2020

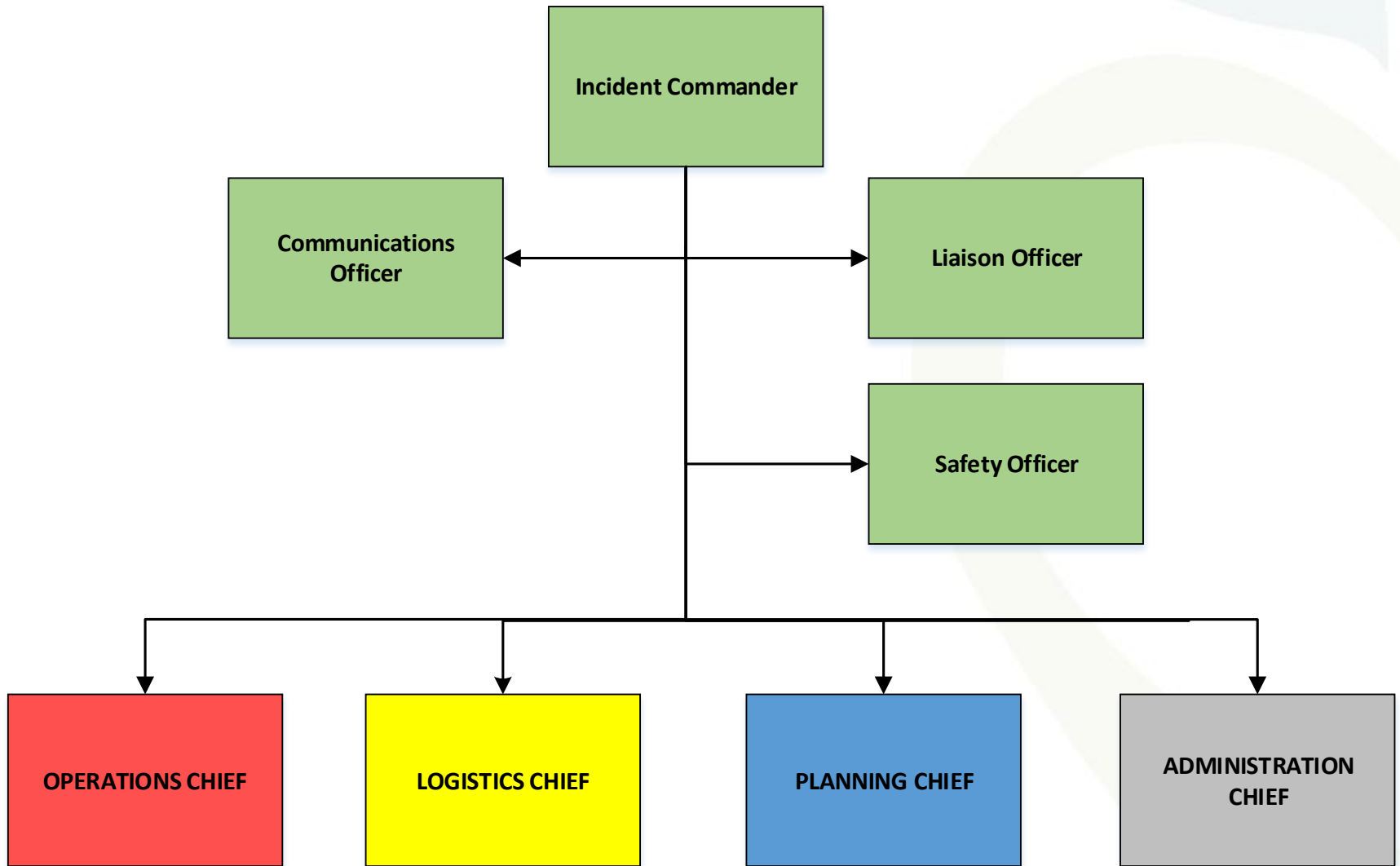
Pandemic Planning IMS Framework



IMS Organizational Structure

- Establishes a command and reporting clarity to ensure effective and coordinated response to all incidents.
- The command structure considers the number of individuals reporting to one person - “span of control.”
- The number of reporting individuals is limited to a person’s ability to effectively delegate and monitor tasks and performance

Basic IMS Structure



Initial IMS Structure Evolution

27 January 2020



Mid Winter IMS Structure Evolution

February 2020



Late Winter IMS Structure Evolution

March 2020



Spring IMS Structure Evolution



Spring 2020




Summer IMS Structure Evolution



Summer 2020



Summary

- **All IMS functions support Operations**
 - **Current IMS structure provide agency sustainability for long-term use**
 - **IMS is a flexible and modular system to maximize span of control**
 - **As response needs change – IMS structure will adapt**
- 

Questions

