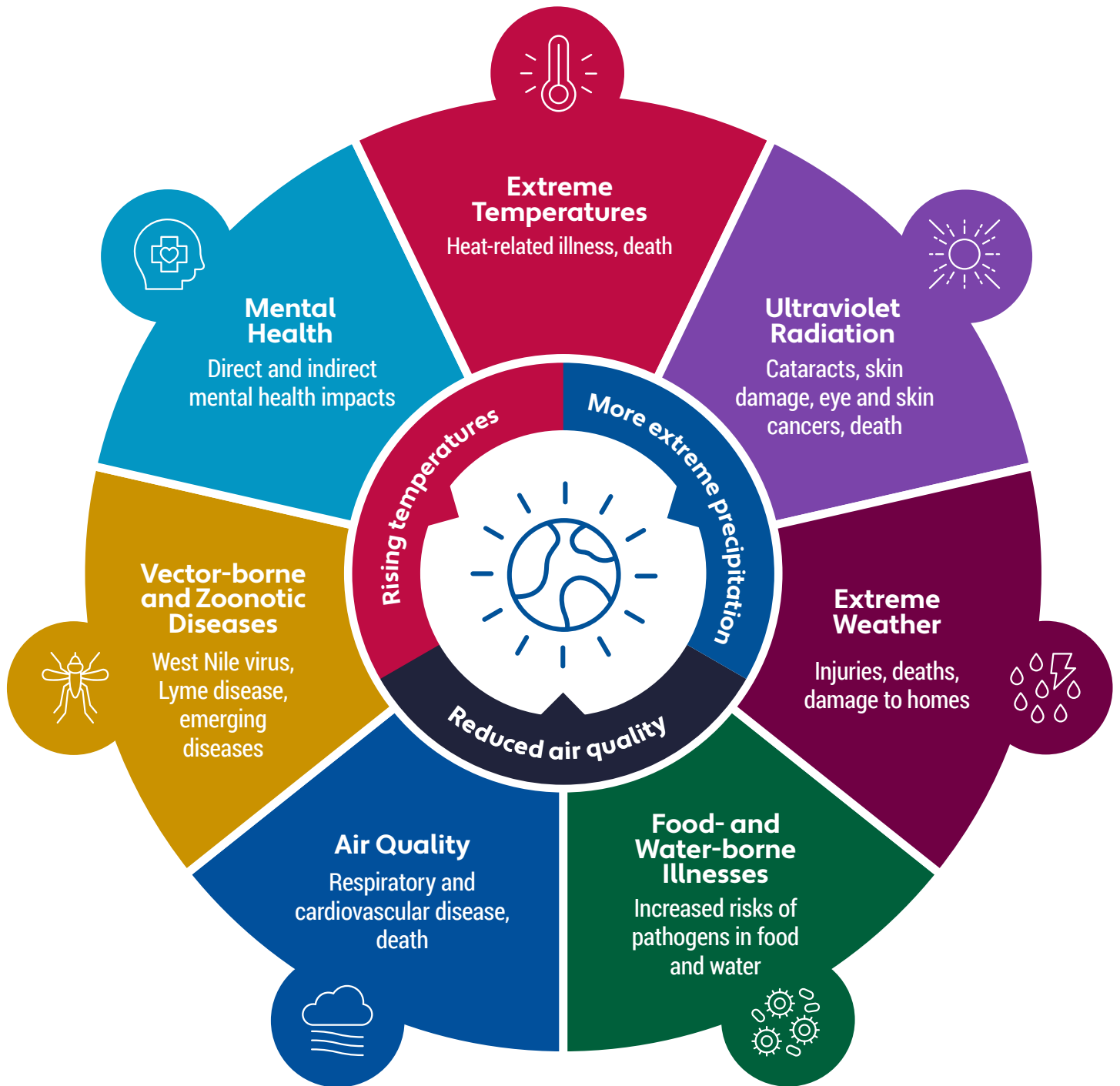


Climate Change Impacts on Health



The impacts of climate change are not experienced equally by all people. Information about local vulnerable populations can be found in the **Climate Change and Health Vulnerability Assessment for Waterloo Region, Wellington County, Dufferin County, and the City of Guelph.**

To view the full report or to request an alternate format of this document contact:



519-575-4400 or TTY: 519-575-4608
www.regionofwaterloo.ca



519-822-2715
www.wdpublichealth.ca

*With support from
Avec l'appui de*



Health Canada Santé Canada

The views expressed herein do not necessarily represent the views of Health Canada