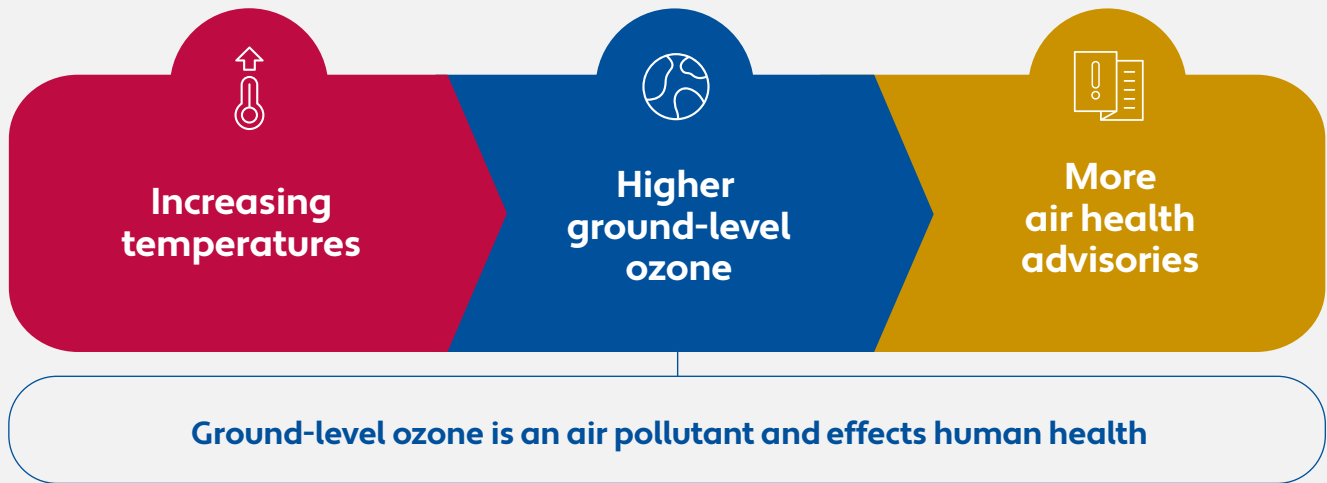




# Air Quality

Key findings from the Climate Change and Health Vulnerability Assessment for Waterloo Region, Wellington County, Dufferin County, and the City of Guelph

## Climate Change Projections



## Health Impacts



### Air Pollution



# Vulnerable Populations

Levels of exposure, sensitivity, and lack of adaptive capacity may create more risk for:



People with cardiovascular or respiratory conditions

Older adults

Outdoor workers

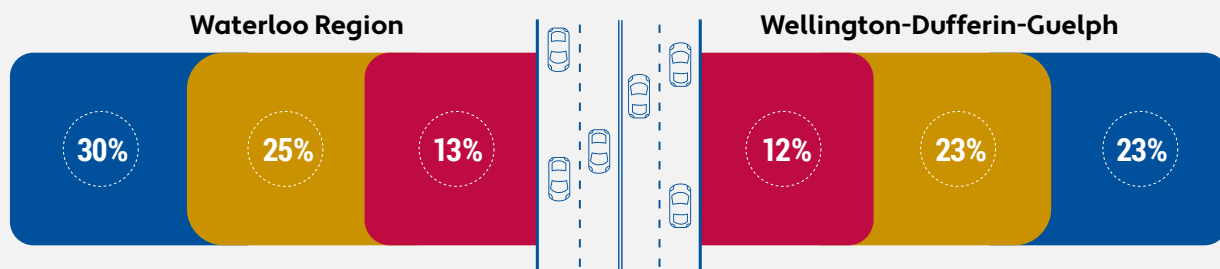
Commuters

Children

- Contributes to early onset of childhood asthma and reduced lung function

People living near major roads and highways

% living within 50 m of major roads and highways% ■  
 living within 100 m of major roads and 150 m from highways% ■  
 living within 100 m of major roads and 500 m from highways ■



Climate change adaptation can help to protect against risks and build resilience to thrive under new climate conditions. Adaptation is a shared responsibility that is crucial to address the health impacts of climate change. To learn more about current and possible community adaptation initiatives, see the full Climate Change and Health Vulnerability Assessment.

To view the full report or to request an alternate format of this document, please contact:



519-575-4400 or TTY: 519-575-4608  
[www.regionofwaterloo.ca](http://www.regionofwaterloo.ca)



519-822-2715  
[www.wdgppublichealth.ca](http://www.wdgppublichealth.ca)

With support from  
 Avec l'appui de



Health Canada    Santé Canada

The views expressed herein do not necessarily represent the views of Health Canada